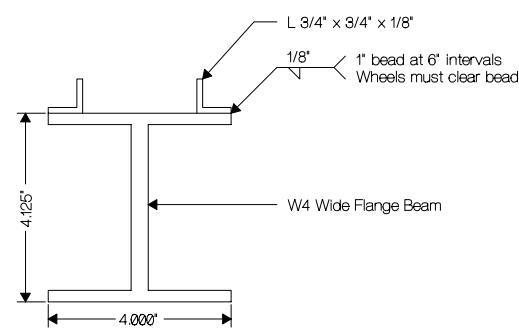
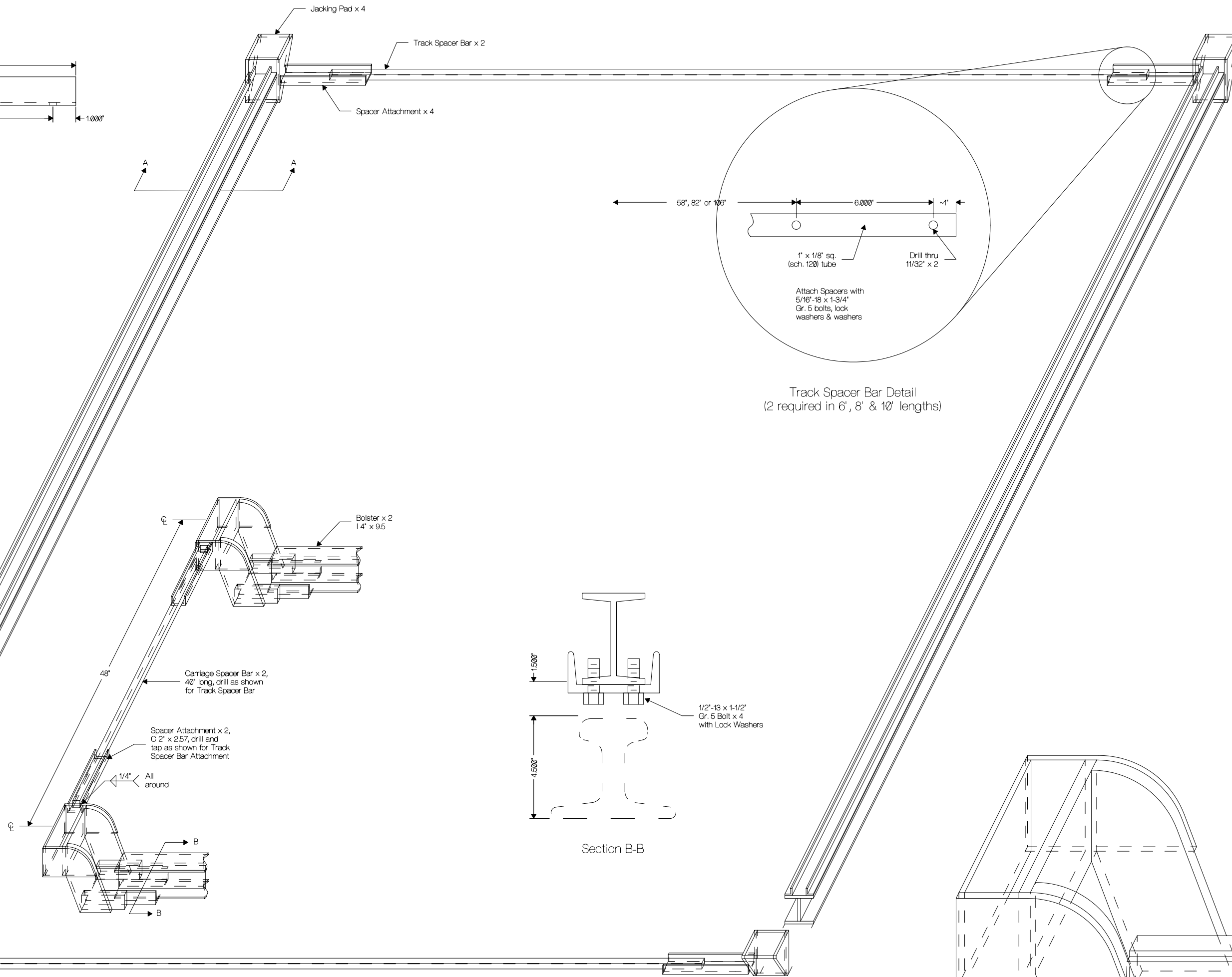


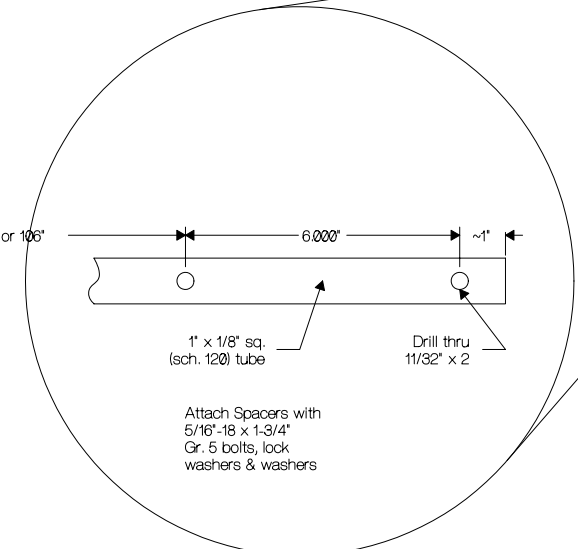
Spacer Attachment Detail
(Front/Left Jacking Pad shown)



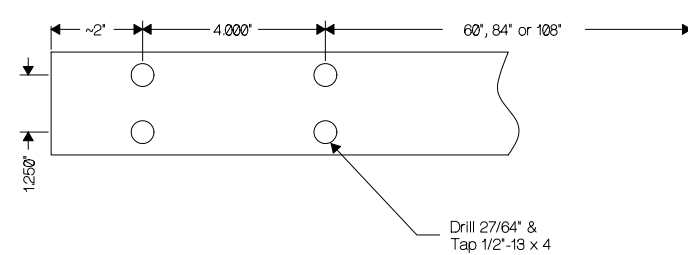
Section A-A



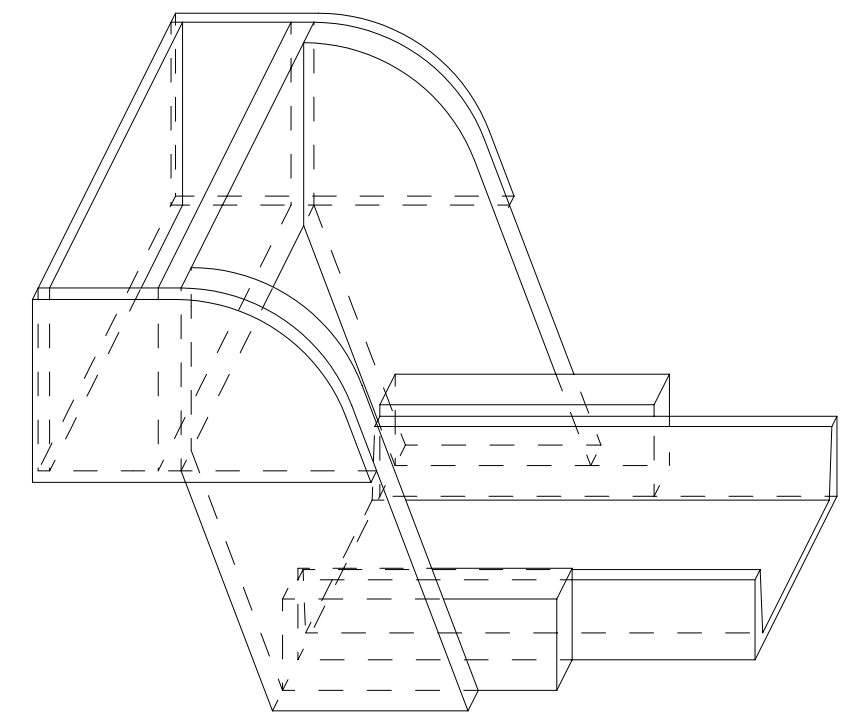
Track And Carriage



Track Spacer Bar Detail
(2 required in 6', 8' & 10' lengths)

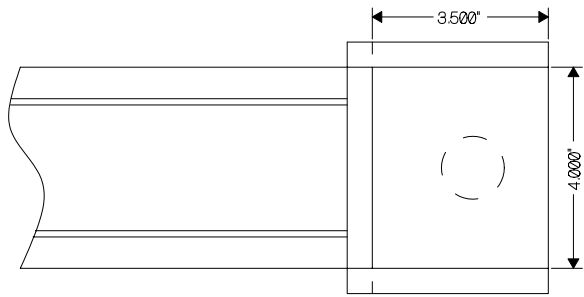


Bolster Detail
(2 required in 6', 8' & 10' lengths)

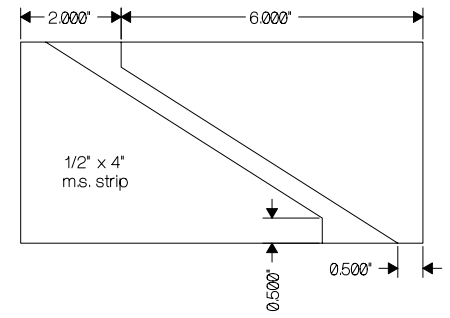


Roller Exploded View

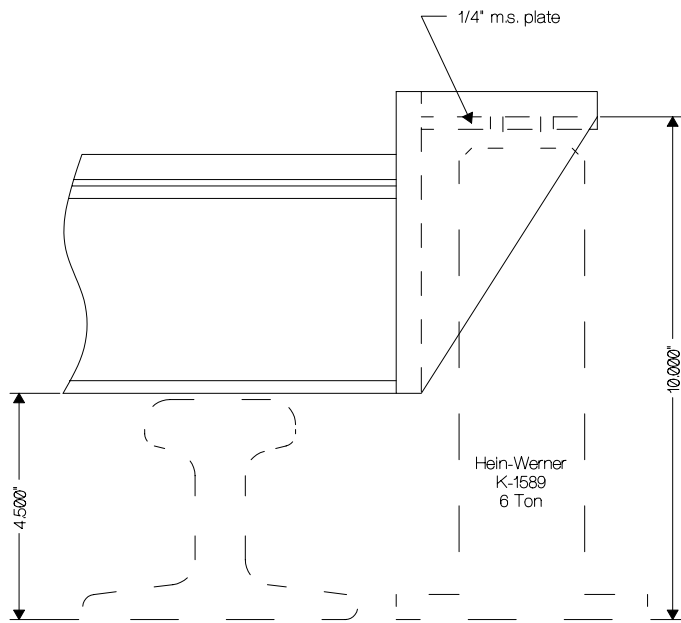
UNDERCARRIAGE ROLLOUT			
ENGINEER	DRAWN BY		
E. WILDE	E. WILDE	SCALE	SHIT 50
PAGE	1 of 3	4:1	D
FILE	ROLLOUT	TYPE	TOOLS
DATE:	92 JUL 20	REV:	10



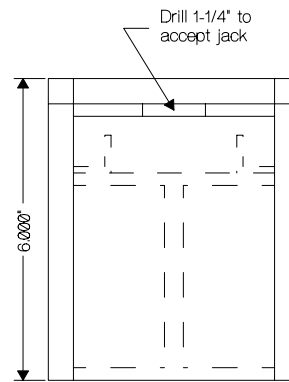
Top



Side Layout

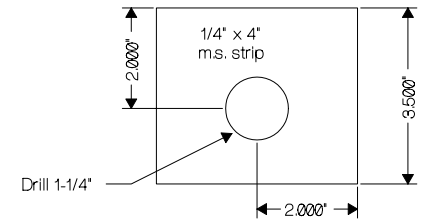


Front



All Jacking Pad parts 1/2" m.s., except as noted. Bevel all edges to be welded and weld clear through (from one side or both, as necessary).

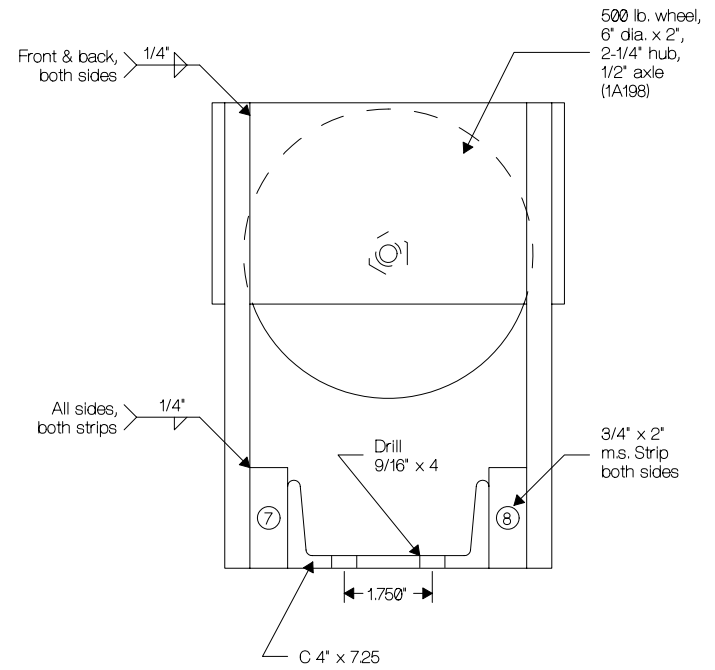
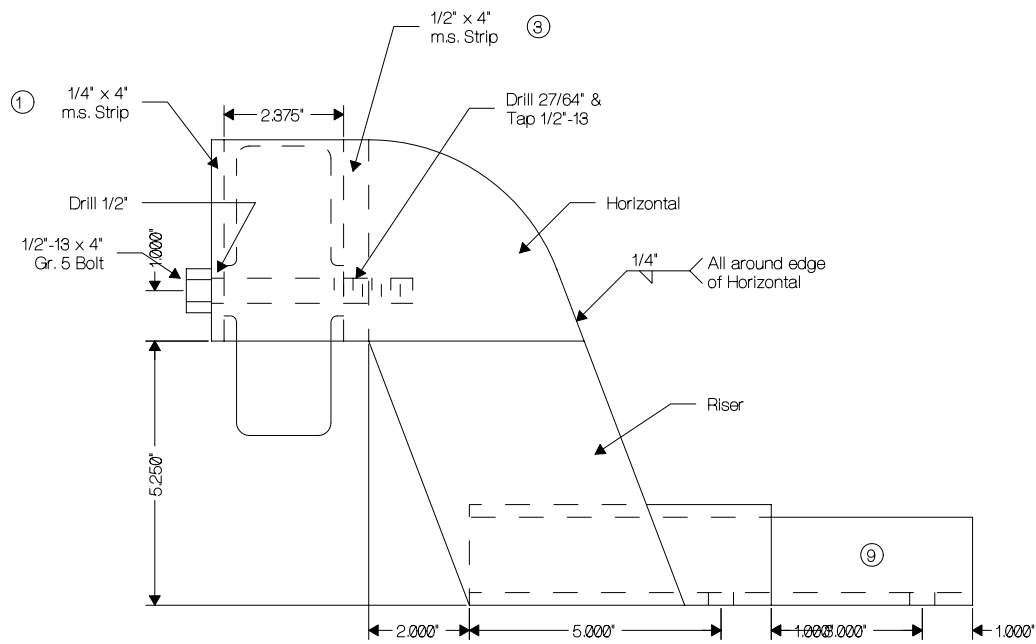
Side



Jack Centering Plate

UNDERCAR ROLLOUT
JACKING PAD DETAIL

ENGINEER: E. WILDE	DRAWN BY: E. WILDE	
PAGE: 2 of 3	SCALE: 4:1	SHT SZ: A
FILE: ROLLOUT	TYPE: TOOLS	
DATE: 92 JUL 20	REV: 1.0	

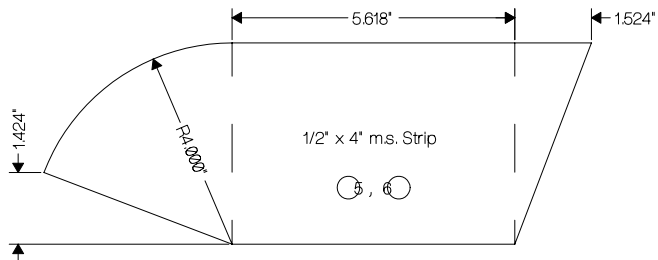


Note: 1/2" bolt is selected so that at least 2-1/2" is unthreaded to provide a smooth axle for the wheel.

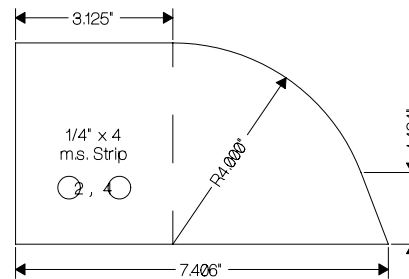
Note: Assemble parts in order shown by circled numbers. Use right-angle magnets to attach 1, then 3, to 2. Align 7, 8 & 9 to 3 using square. Tack all parts before welding.

Front

Side



Riser Layout



Horizontal Layout

UNDERCAR ROLLOUT
ROLLER DETAIL

ENGINEER: E. WILDE	DRAWN BY: E. WILDE
PAGE: 3 of 3	SCALE: 8HT SZ 4:1 A
FILE: ROLLOUT	TYPE: TOOLS
DATE: 92 JUL 20	REV: 1.0